

Anti-CD25 hlgG1 Antibody(Basiliximab)

Product information

GM-52329AB-10	10 µg
GM-52329AB-100	100 µg
GM-52329AB-1000	1 mg

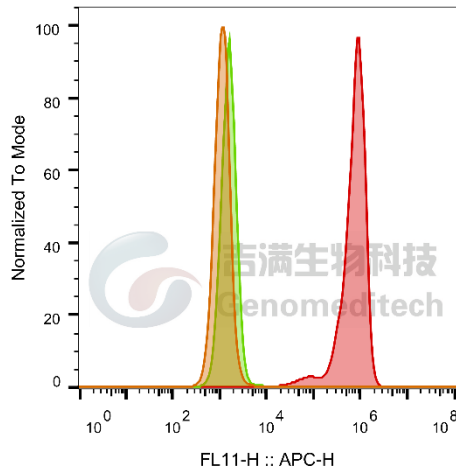
Antibody Information

Species Reactivity	Human;
Clone	Basiliximab
Source/Isotype	Monoclonal human IgG1, κ
Application	Flow cytometry;
Other Names	IL2RA, IDDM10, IL2R, IMD41, TCGFR, p55
Gene ID	NP_000408.1 (human)
Storage	Store at 2-8°C short term (1-2 weeks).Store at ≤ -20°C long term. Avoid repeated freeze-thaw.
Formulation	Phosphate-buffered solution, pH 7.2.
Endotoxin	< 1 EU/mg, determined by LAL gel clotting assay

Data Examples

Flow cytometry

H_CD25 CHO-K1 Cell Line (Catalog # GM-C27654) was stained with Anti-CD25 hlgG1 Antibody(Basiliximab) or isotype control antibody.



SampleID	Geometric Mean : FL11-H
CHO-K1 anti-CD25+APC-2nd Ab	1152
CHO-K1 H_CD25 H_IgG+APC-2nd Ab	1599
CHO-K1 H_CD25 anti-CD25+APC-2nd Ab	6.65E5

Fig. FACS